

STEEL PALLET CAGES

SPECIFICATIONS



The racking friendly SPCTH-04SP Steel Pallet Cage is designed for the safe storage and transport of loose or packaged goods. The steel pallet makes it the perfect solution for long-term outdoor use, harsh conditions, heavy loads and is easy to sterilise when used in clean room environments.

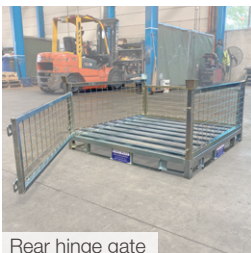
Features:

- Side panels are mounted to a 1160 x 1160mm steel pallet
- Removable front and rear outward opening gates for ease of access, even when stacked
- Forklift or hand pallet jack accessible base for easy transportation
- Stacks 4 high when empty and 2 high when fully loaded
- Suitable for storage on pallet racking
- Steel pallet increases lifespan and allows use in food manufacturing and cleanroom environments
- Optional galvanised sheet metal floor available on request
- Zinc-plated finish

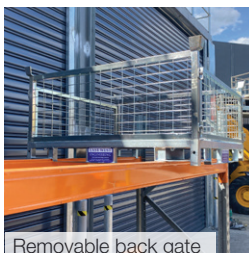
Supplied standard as flatpack (for on-site assembly)



Removable front & back gate

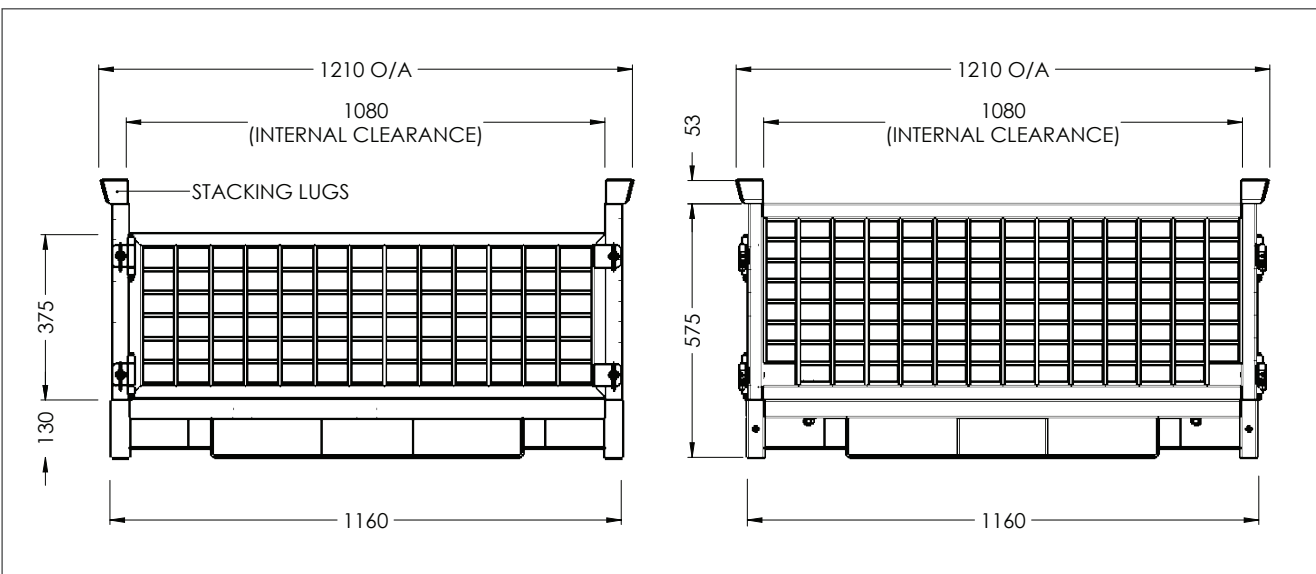


Rear hinge gate



Removable back gate

Working Load Limit (WLL)	1000kg (evenly distributed)
Overall Dimensions	1210 x 1210 x 628mm
Internal Clearance	1080 x 1080 x 375
Unit Weight	62kg
Fork Pocket Size	245 x 80mm
Fork Pocket Centres	452mm



Australia Wide Sales & Service

sales@materialshandling.com.au | www.materialshandling.com.au | 1300 65 00 35

MATERIALS
Handling PTY LTD *Working with ease*