

LIFTING BEAMS

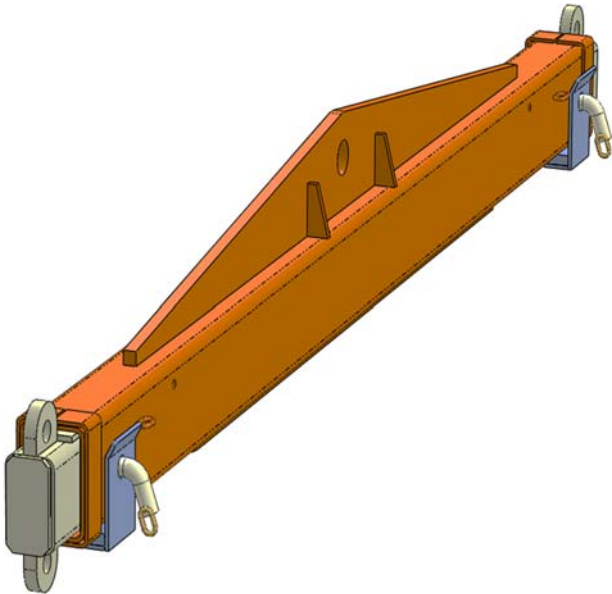
LCEL2439 SPECIFICATIONS

The LCEL2439 Lifting Beam is a unique multi-tasking beam, which can be used to lift long loads by crane. Supplied with 2 retaining brackets for storage on truck trays, this spreader beam is designed to suit truck mounted cranes.

Loads can be lifted via the centre single hook point (as a 'Lifting Beam'), or end lifted using a 2 leg Chain Sling (as a 'Spreader Beam').

The Spreader Beam load connection points are adjustable to 3 positions by moving the extendable arms each end. Both extendable arms are locked into position via safety pins. The unit is supplied standard with a safety swivel hook at each end.

The main body is painted in 'Safety Orange' with the extendable arms are zinc-plated. This unit is fully 'Third Party' certified to relevant Australian Standards - Certification supplied upon request.



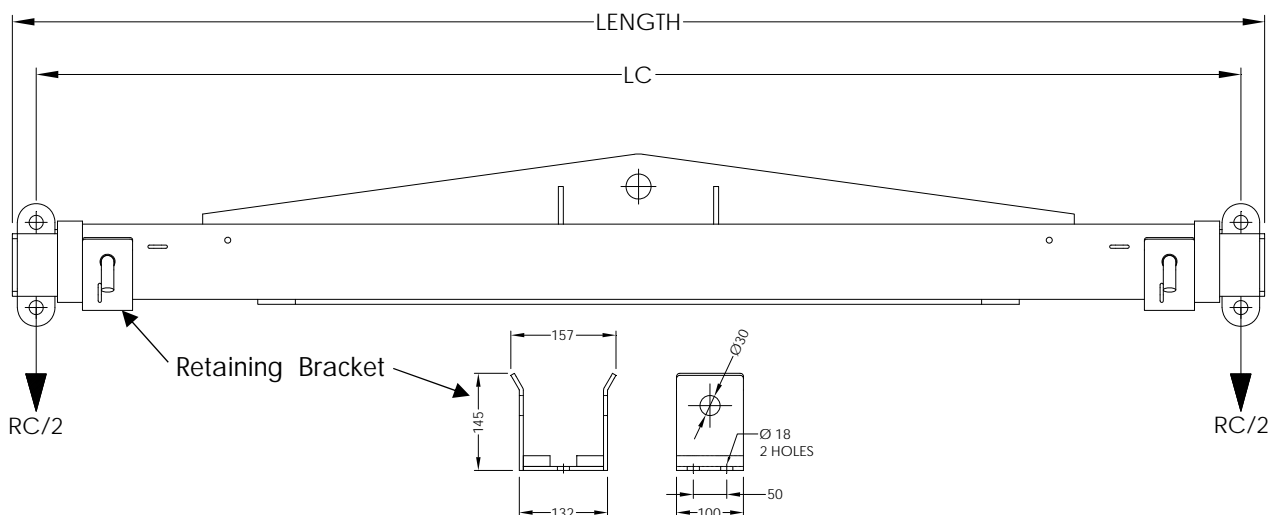
SPECIFICATIONS:

Rated Capacity: See the load chart below

Load Centre (LC): See the load chart below

Unit Weight: 140 kg

Overall size @ LC 2405: 210 (W) x 345 (H) x 2500 (L)



LCEL2439 LOAD CHART:

RATED CAPACITY (RC) WHEN USED AS	FULLY RETRACTED (LC @ 2405mm)	MIDDLE POSITION (LC @ 3165mm)	FULLY EXTENDED (LC @ 3925mm)
LENGTH	2500mm	3260mm	4020mm
LIFTING BEAM	4500KG	2500KG	1300KG
SPREADER BEAM	9000KG	7200KG	5600KG