

JL 250

JL120.720



4,0 km/h



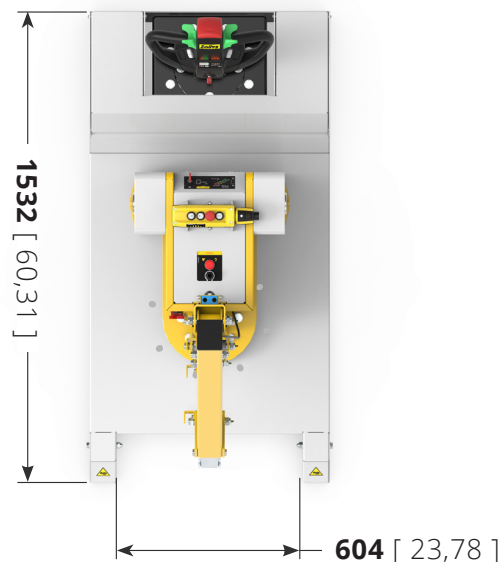
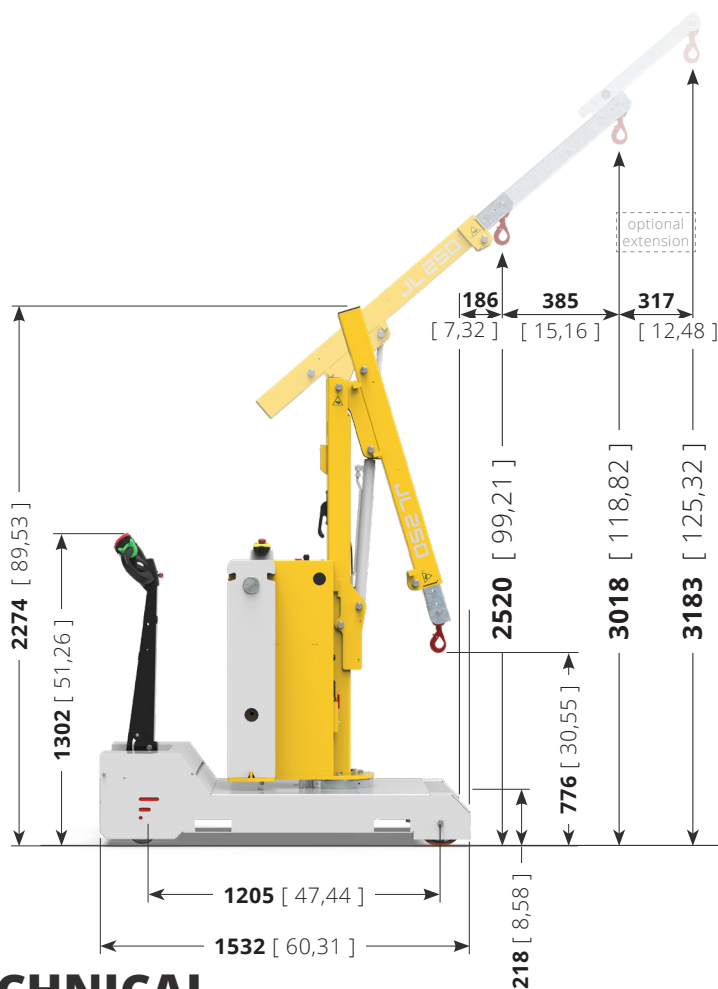
250 kg



1.050 mm



- Loads up to 250 kg
- Powered drive system
- Arm controls with wire control
- Lift and extension with hydraulic system
- Standard Anti-tipping system
- 100% electric



TECHNICAL DATA

Drive controls

Description	U.M.	Value
Type of control		Tillerhead

Safety

Description	U.M.	Value
Dead man safety system		Sensor on tiller head
Emergency reverse button		On tiller head
Power Emergency stop		Detachable power connector

Performances

Description	U.M.	Value
Max. forward speed	km/h	4,0
Max. backward speed	km/h	4,0
Max. lifting capacity	kg	250

Batterie

Description	U.M.	Value
Tipologia batterie		Traction AGM batteries
Battery voltage	V	12
Nominal Capacity 20 h	Ah	130
Battery charger		External - high frequency

Motor

Description	U.M.	Value
Engine		Electric
Electricity		Direct current
Engine voltage	V	24

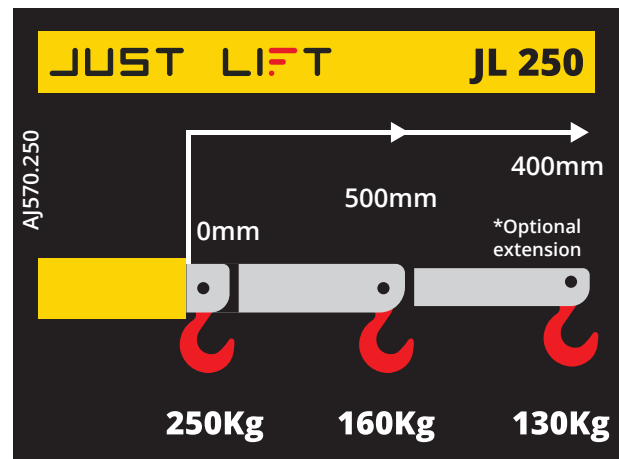
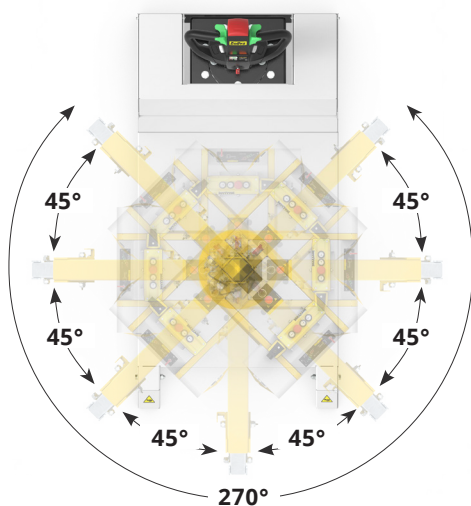
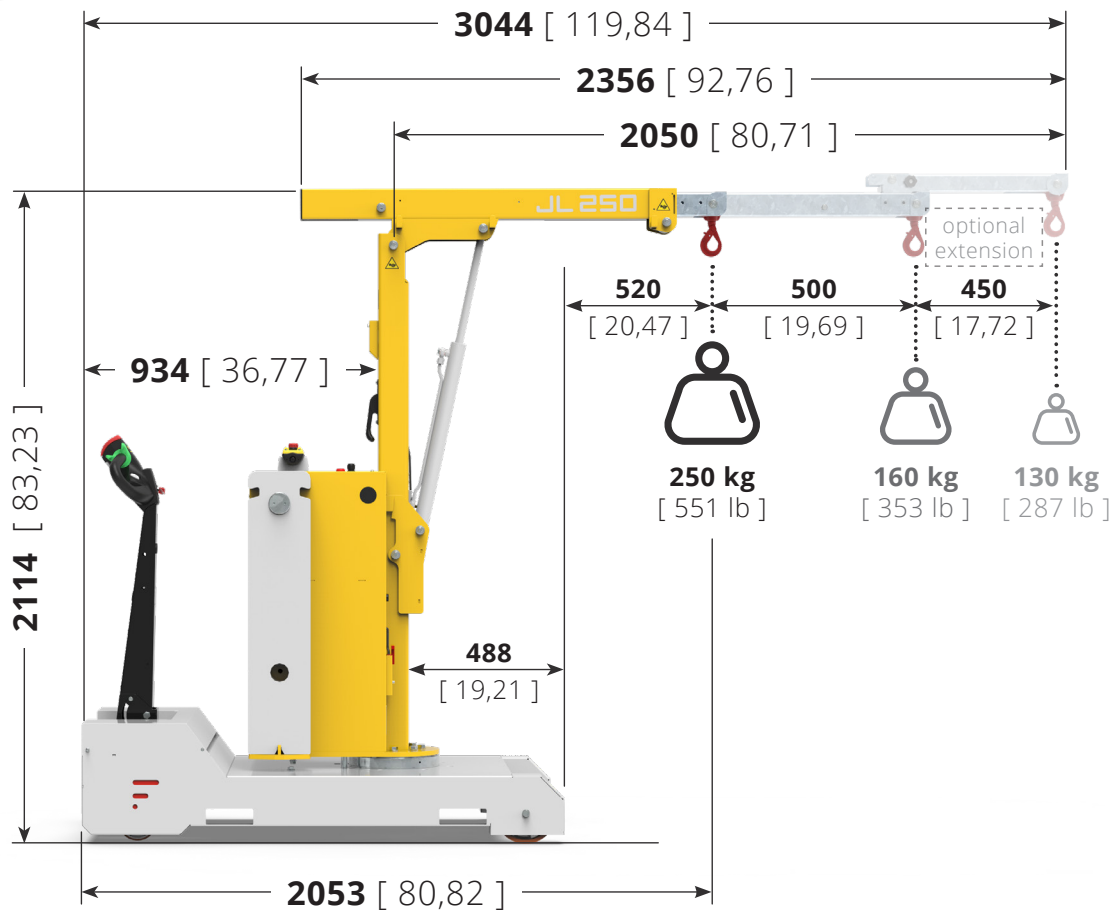
Dimensions and Weight

Description	U.M.	Value
Weight incl. with batteries	kg	680
Length max	mm	2.847
Length min	mm	1.902
Width	mm	780
Height max	mm	2.960
Height min	mm	2.118
lifting height max	mm	2.951
Wheelbase	mm	915
Turning circle	mm	1.050

Wheels

Description	U.M.	Value
Tyre		Polyurethane

JL 250



Electric crane JL 250

The **JL250 mini hydraulic crane by Just Lift** with hydraulic lift is the most versatile on the market. Born to facilitate the lifting of light weights **up to 250 kg** in aisles and confined spaces. One of the strengths is the slewing ring that makes the 240° rotating movement fluid and smooth.