

## JL 150

JL110.720



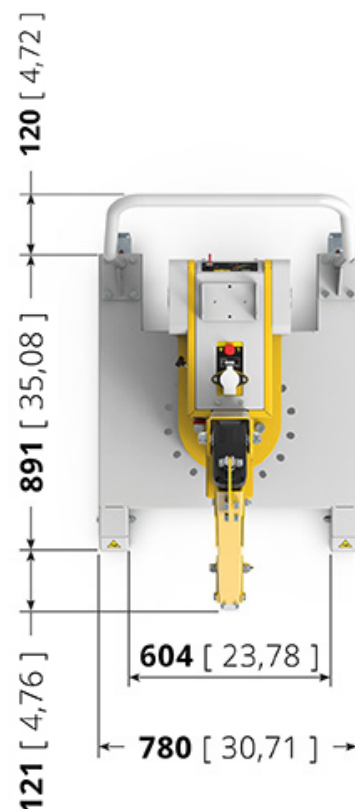
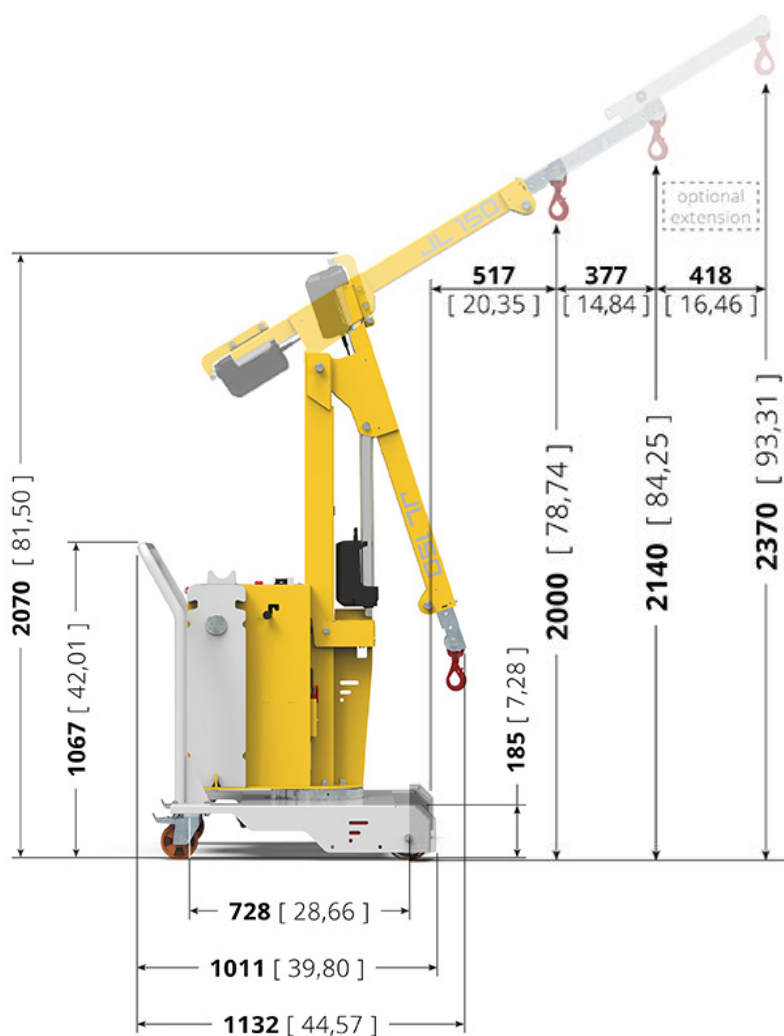
150 kg



1.050 mm



- Loads up to 150 kg
- Manual push guide
- Arm controls with Wire control
- Lift and extension with electric system
- Standard Anti-tipping system
- 100% electric



## TECHNICAL DATA

### Drive controls

Description	U.M.	Valeur
Type of control		Manual push

### Safety

Description	U.M.	Valeur
Dispositivo antischiacciamento		Beeper
Power Emergency stop		Detachable power connector

### Performances

Description	U.M.	Valeur
Max. lifting capacity	kg	150

### Battery

Description	U.M.	Valeur
Batteries type		Traction AGM batteries
Battery voltage	V	12
Nominal Capacity 20 h	Ah	96
Battery charger		External - high frequency

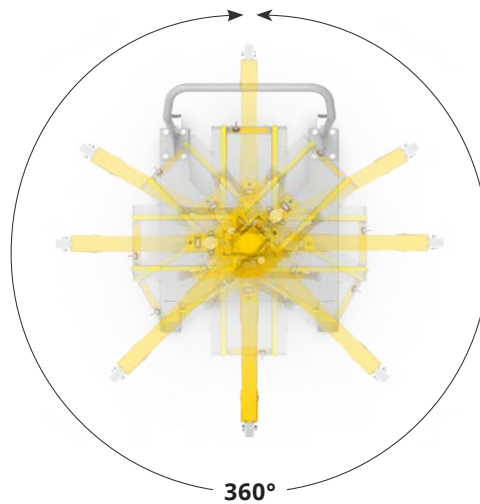
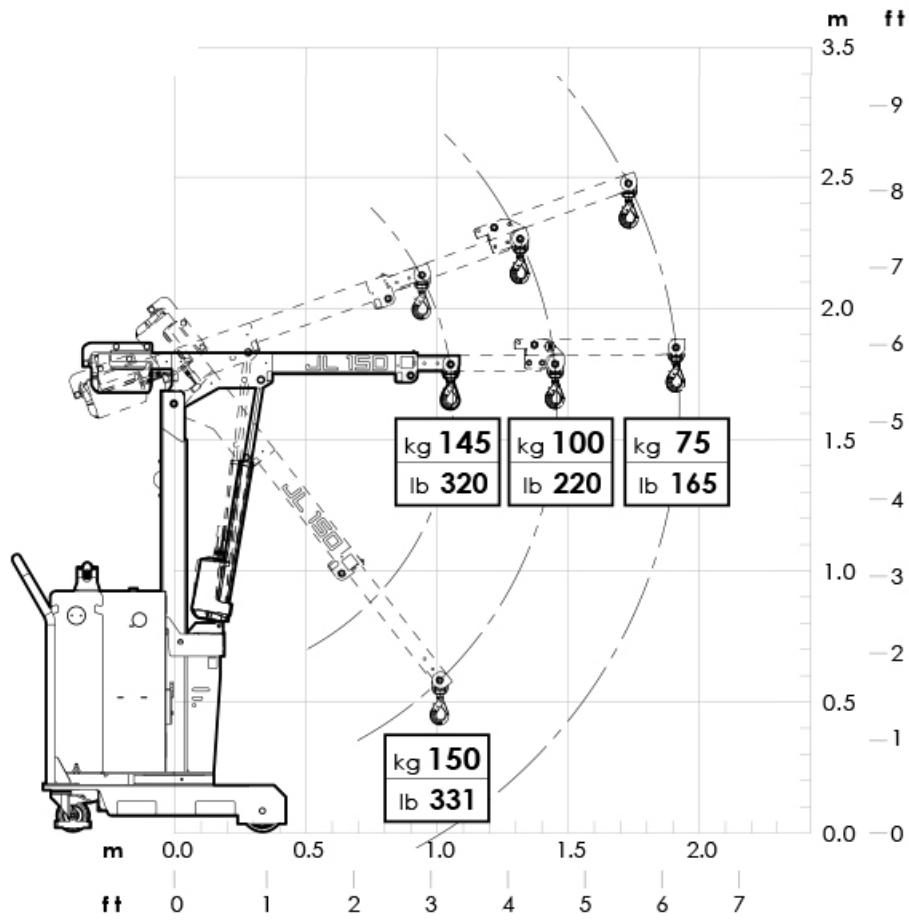
### Dimensions and Weight

Description	U.M.	Valeur
Weight incl. with batteries	kg	396
Length max	mm	2.100
Length min	mm	1.132
Width	mm	780
Height max	mm	2.736
Height min	mm	2.070
Loading platform height	mm	500
Wheelbase	mm	728
Turning circle	mm	1.500

### Wheels

Description	U.M.	Valeur
Tyres		Pneumatic

# JL 150



## Electric crane JL 150

The JL150 electric crane with electric lift is the most compact and ergonomic on the market. Created to facilitate the lifting and handling of light weights of any type up to 150 kg, thanks to its small footprint it can be used in narrow aisles and spaces. One of the strengths is the slewing ring which makes the 360° rotating movement fluid and smooth.